

CARTELLA TESSUTI / FABRIC SAMPLES

Categoria A / Category A

Canvas

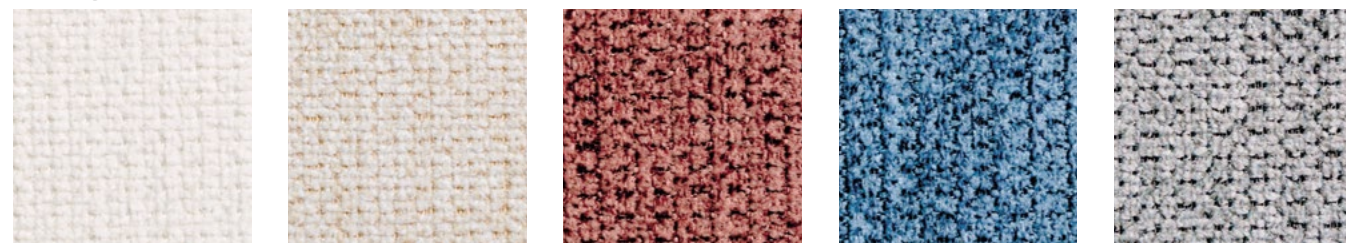


sand brown rose green white

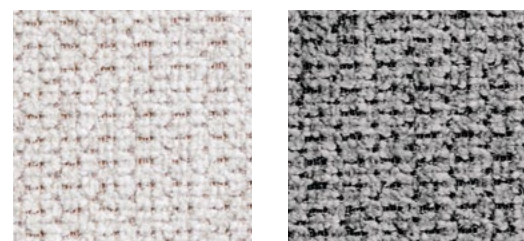


grey

Aragon



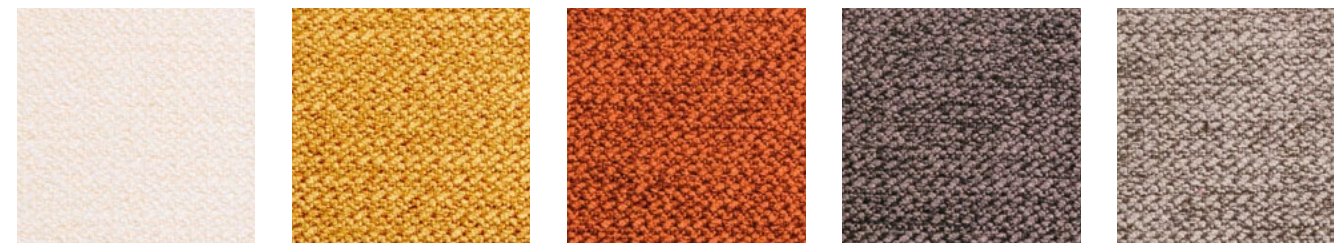
01 03 59 74 93



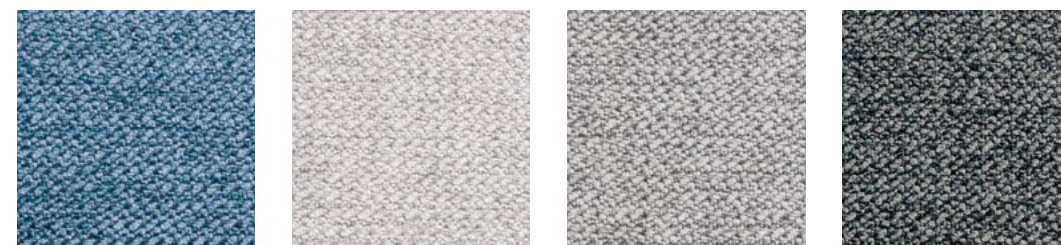
80 97

Categoria A / Category A

Cali

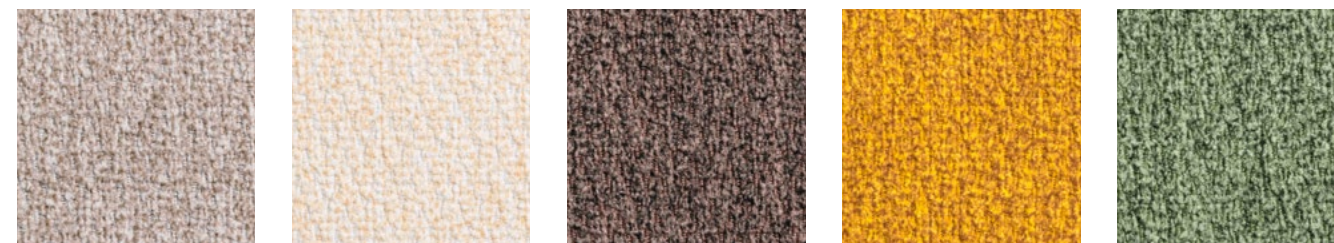


704 725 729 784 734



727 716 746 786

Seattle



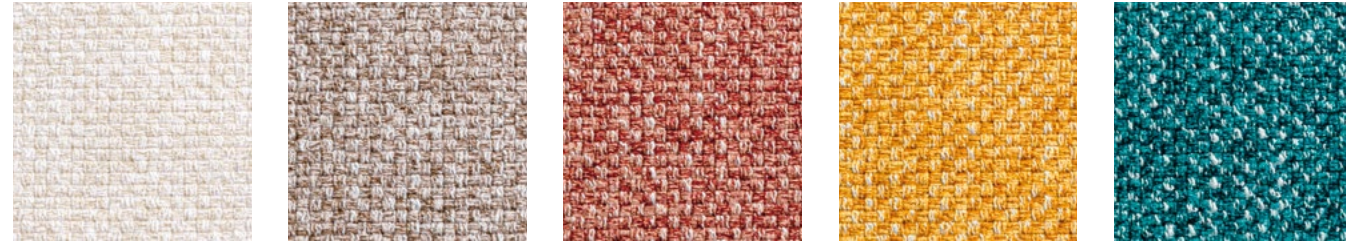
16 04 74 35 38



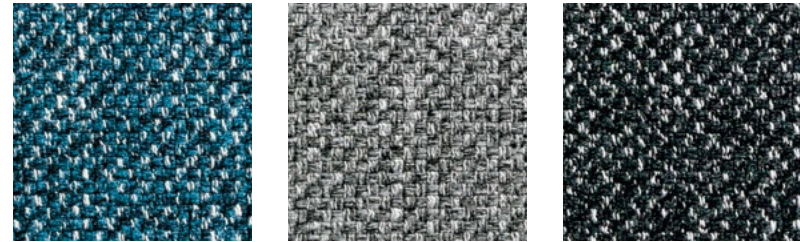
06 26 43

Categoria A / Category A

Quebec



04 34 03 35 58



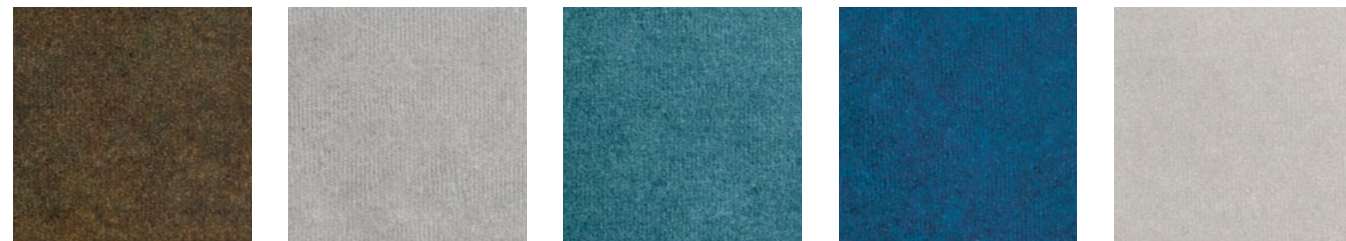
37 36 02

Categoria B / Category B

Nobilbond



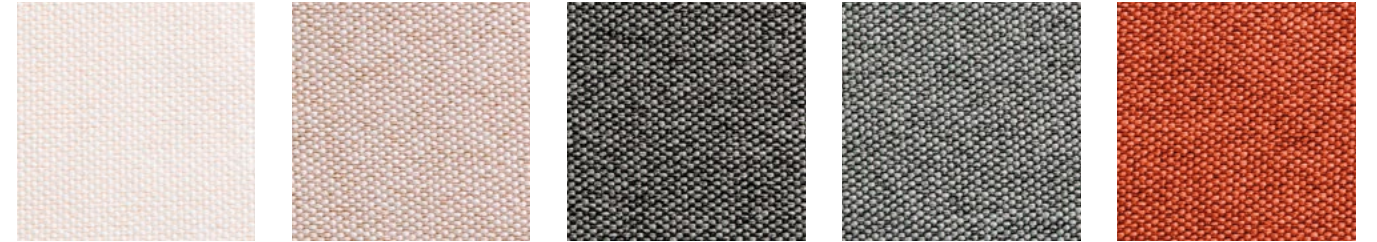
01 bianco 20 avorio 130 cachi 07 ruggine 105 mandarino



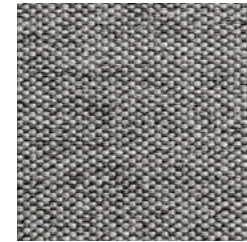
2100 bistro 205 fumo 16 avio 14 acquamarina 616 cenere

Categoria B / Category B

Bombay



01 14 64 36 39

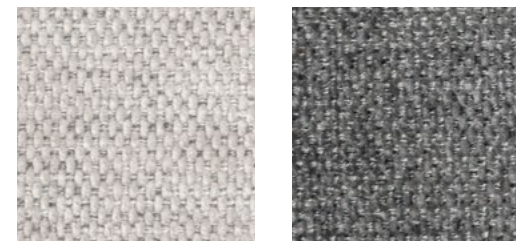


26

Miami

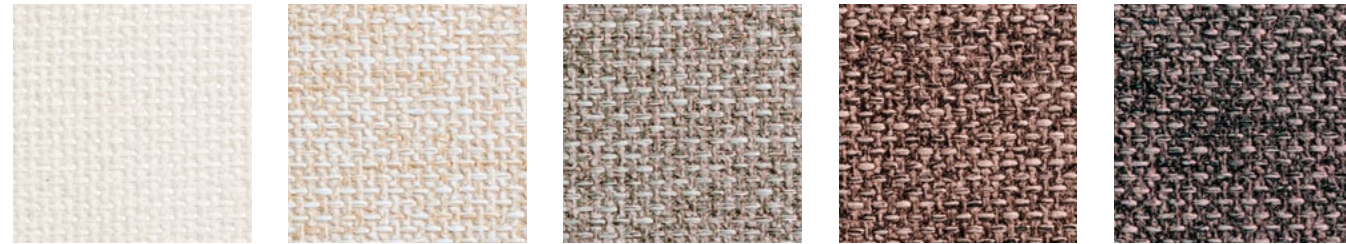


34 14 64 67 48

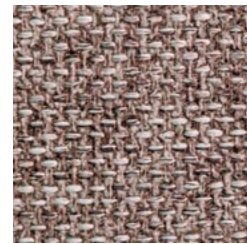


26 56

Pop



111 400 402 405 606



607

Elegant wish

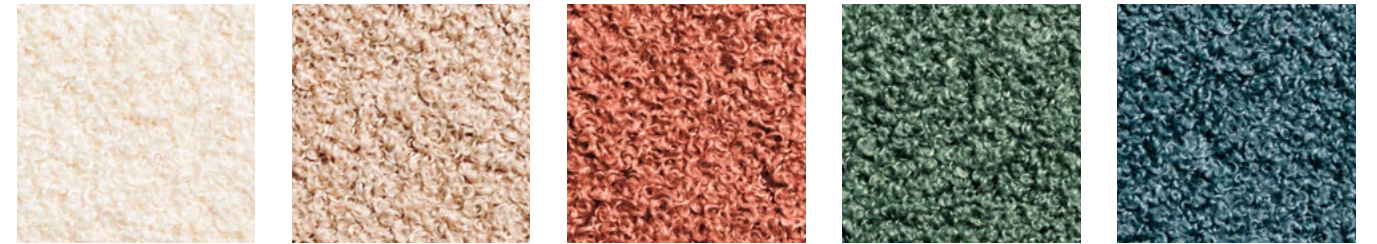


02 56 28 72 15



85

Now or never



03 14 54 37 77

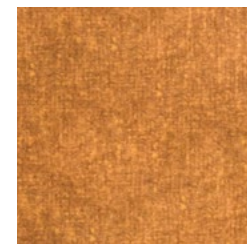


100

Toledo



44 04 24 19 74



45 48

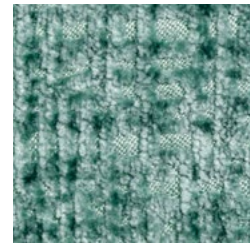
Valletta



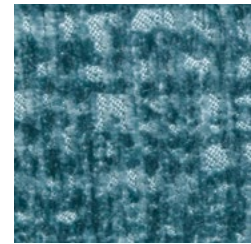
04



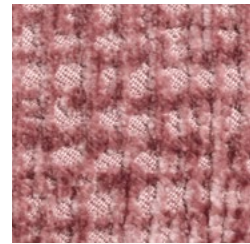
34



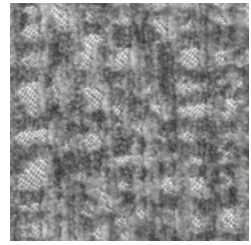
28



57



13



56

Arca



101



421



445



602

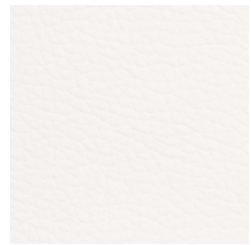


603

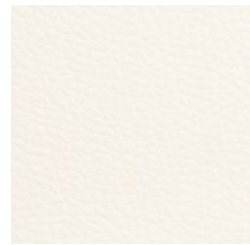


609

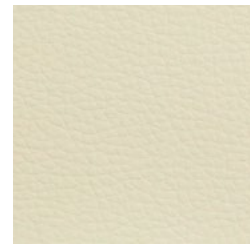
Top



111



100



101



603



415

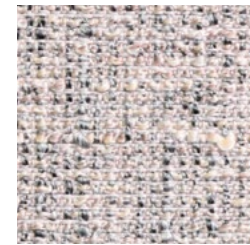


600

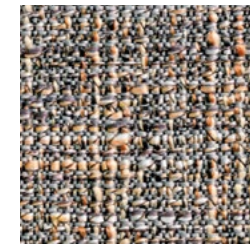


608

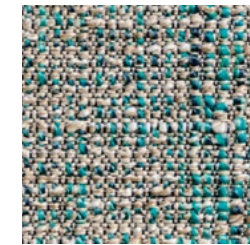
Spice



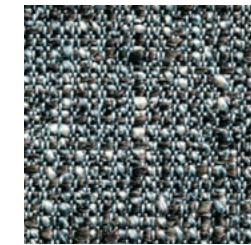
1



2



3

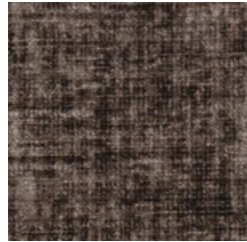


6

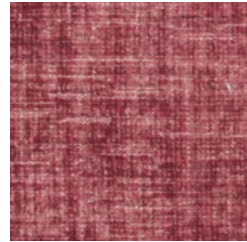
Oviedo



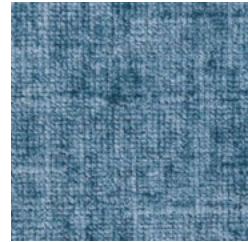
01



74



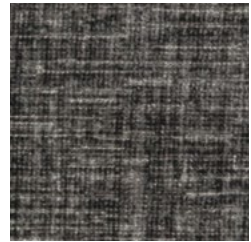
13



47



06

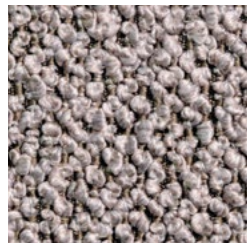


46

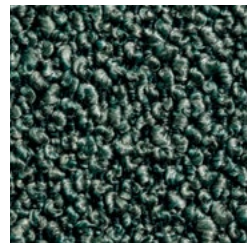
Alghero



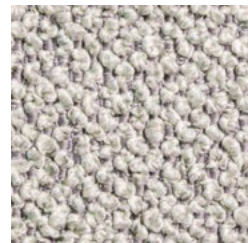
115



20



751



120



45



521

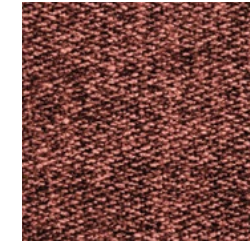
Pinò



Avorio 902



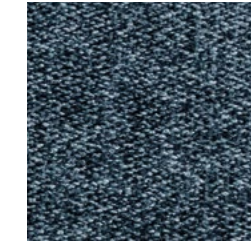
Tortora 905



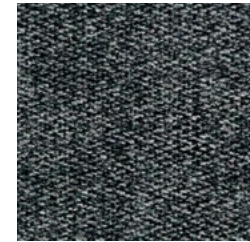
Lotto 302



Moro 103

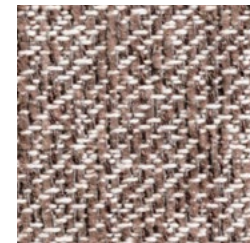


Navy 601

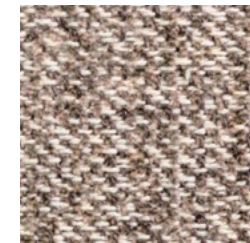


Antracite 801

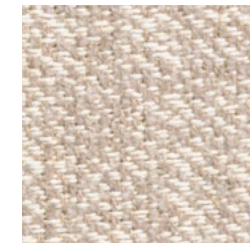
Salice



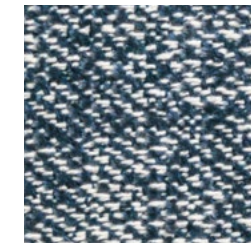
06



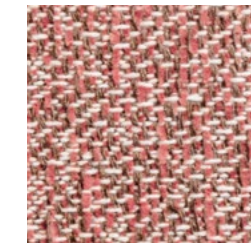
18



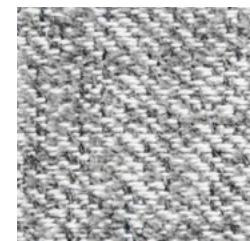
03



17



12



20

Cruise Chenille Solemio

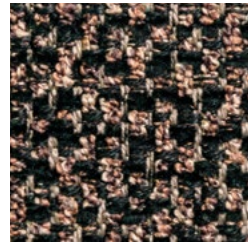


02

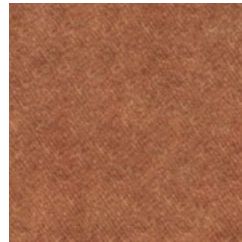


03

Cruise Melange Solemio

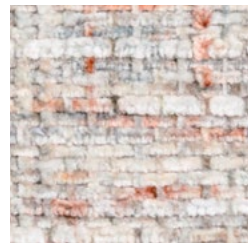


02



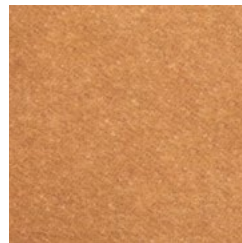
107

Cachemire



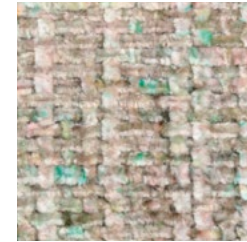
400

Solemio



06

Cachemire



800

Solemio



09

Cachemire



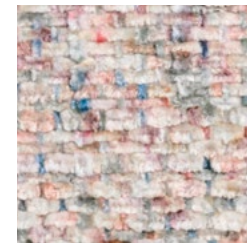
500

Solemio



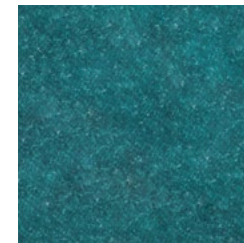
17

Cachemire














401






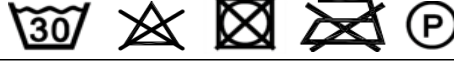
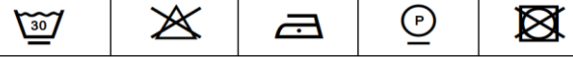
Solemio




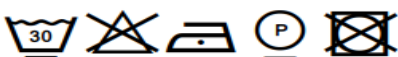
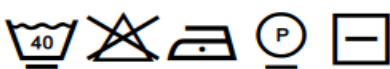



123

I tessuti della Collezione Coordinati devono essere utilizzati esclusivamente come proposti e non possono essere separati o mischiati con tessuti di altre cartelle. / The fabrics in the Collezione Coordinati must be used exactly as presented and cannot be separated or mixed with other fabrics.

Dati etichetta	Dati etichetta
Art. CANVAS	Art. NOBILBOND
Cat. A	Cat. B
Altezza/Width: 140 cm.	Altezza/Width: 140 cm.
Composizione/Composition: 100% PL	Composizione/Composition: 100% PL
Martindale/Abrasion Resistance: > 70000 cicli/cycles	Martindale/Abrasion Resistance: 100000 cicli/cycles
Manutenzione/Cleaning Instructions:	Manutenzione/Cleaning Instructions:
	
Caratteristiche/Features: Idrorepellente/Water repellent	Caratteristiche/Features: Idrorepellente/Water repellent
Smacchiabile/Stain removable	
Art. ARAGON	Art. BOMBAY
Cat. A	Cat. B
Altezza/Width: 140 cm.	Altezza/Width: 140 cm.
Composizione/Composition: 95% PES - 5% NY	Composizione/Composition: 100% PL
Martindale/Abrasion Resistance: > 45000 cicli/cycles	Martindale/Abrasion Resistance: >100000 cicli/cycles
Manutenzione/Cleaning Instructions:	Manutenzione/Cleaning Instructions:
	
Caratteristiche/Features: Idrorepellente/Water repellent	Caratteristiche/Features: Idrorepellente/Water repellent
Art. CALI'	Art. MIAMI
Cat. A	Cat. B
Altezza/Width: 140 cm.	Altezza/Width: 140 cm.
Composizione/Composition: 100% PL	Composizione/Composition: 100% PL
Martindale/Abrasion Resistance: 90000 cicli/cycles	Martindale/Abrasion Resistance: >100000 cicli/cycles
Manutenzione/Cleaning Instructions:	Manutenzione/Cleaning Instructions:
	
Caratteristiche/Features: Idrorepellente/Water repellent	Caratteristiche/Features: Idrorepellente/Water repellent
Art. SEATTLE	Art. POP
Cat. A	Cat. B
Altezza/Width: 140 cm.	Altezza/Width: 140 cm.
Composizione/Composition: 100% PL	Composizione/Composition: 100% PL
Martindale/Abrasion Resistance: 46000 cicli/cycles	Martindale/Abrasion Resistance: 35000 cicli/cycles
Manutenzione/Cleaning Instructions:	Manutenzione/Cleaning Instructions:
Stiratura sul rovescio/Ironing on the back side	
	
Caratteristiche/Features: Idrorepellente/Water repellent	Caratteristiche/Features: Idrorepellente/Water repellent
Art. QUEBEC	Art. ELEGANT WISH
Cat. A	Cat. B
Altezza/Width: 140 cm.	Altezza/Width: 140 cm.
Composizione/Composition: 100% PL	Composizione/Composition: 100% PL
Martindale/Abrasion Resistance: 35000 cicli/cycles	Martindale/Abrasion Resistance: >100000 cicli/cycles
Manutenzione/Cleaning Instructions:	Manutenzione/Cleaning Instructions:
	
Caratteristiche/Features: Idrorepellente/Water repellent	Irrestringibile/No-Shrink
Art. NOW OR NEVER	
Cat. B	
Altezza/Width: 140 cm.	
Composizione/Composition: 100% R-PES	
Martindale/Abrasion Resistance: >90000 cicli/cycles	
Manutenzione/Cleaning Instructions:	
	
Caratteristiche/Features: Poliestere riciclato/Recycled Polyester	

Dati etichetta	Dati etichetta
Art. TOLEDO	Art. SPICE
Cat. C	Cat. D
Altezza/Width: 140 cm.	Altezza/Width: 140 cm.
Composizione/Composition: 100% PL	Composizione/Composition: 100% PES
Martindale/Abrasion Resistance: > 100000 cicli/cycles	Martindale/Abrasion Resistance: > 40000 cicli/cycles
Manutenzione/Cleaning Instructions:	Manutenzione/Cleaning Instructions:
	
Caratteristiche/Features: Idrorepellente/Water repellent	
Art. VALLETTA	Art. OVIEDO
Cat. C	Cat. D
Altezza/Width: 140 cm.	Altezza/Width: 140 cm.
Composizione/Composition: 100% PL	Composizione/Composition: 100% PL
Martindale/Abrasion Resistance: 50000 cicli/cycles	Martindale/Abrasion Resistance: > 100000 cicli/cycles
Manutenzione/Cleaning Instructions:	Manutenzione/Cleaning Instructions:
	
Caratteristiche/Features: Idrorepellente/Water repellent	Caratteristiche/Features: Quick Clean www.quick-clean.info
Art. TOP	Art. ALGHERO
Cat. C	Cat. D
Altezza/Width: 140 cm.	Altezza/Width: 140 cm.
Composizione/Composition: 85% PVC - 15% PL	Composizione/Composition: 100% PES
Martindale/Abrasion Resistance: 100000 cicli/cycles	Martindale/Abrasion Resistance: 35000 cicli/cycles
Manutenzione/Cleaning Instructions: Non usare ossidanti o candeggianti ottici - Strofinare lievemente con spugna umida non abrasiva e, se necessario, utilizzare una piccola quantità di sapone neutro. Asciugare tempestivamente con panno/Do not use oxidizing or brightening agents - Rub lightly with a moistened non-abrasive sponge. If necessary use a small amount of neutral soap. Wipe swiftly and thoroughly with a dry cloth.	Manutenzione/Cleaning Instructions:
	
Art. ARCA	
Cat. C	
Altezza/Width: 140 cm.	
Composizione/Composition: 100% PL	
Martindale/Abrasion Resistance: 50000 cicli/cycles	
Manutenzione/Cleaning Instructions: Stirare sul rovescio/ Ironing on backside	
	

Dati etichetta	Dati etichetta
Art. PINO'	Art. CRUISE CHENILLE
Cat. E	Cat. F
Altezza/Width: 140 cm.	Altezza/Width: 140 cm.
Composizione/Composition: 100% PL	Composizione/Composition: 67% R-PL 24% PC 9% CO
Martindale/Abrasion Resistance: > 80000 cicli/cycles	Martindale/Abrasion Resistance: 50000 cicli/cycles
Manutenzione/Cleaning Instructions: E' consigliato il lavaggio a secco/Dry Cleaning is recommended	Manutenzione/Cleaning Instructions: Non candeggiare - Non utilizzare detersivi contenenti agenti ossidanti o brillantanti/Do not bleach - Do not use detergents containing oxidizing or brightening agents
	
Art. SALICE	Caratteristiche/Features: Poliestere riciclato/Recycled
Cat. E	Polyester
Altezza/Width: 140 cm.	Art. CRUISE MELANGE
Composizione/Composition: 65% CO 35% PL	Cat. F
Martindale/Abrasion Resistance: > 50000 cicli/cycles	Altezza/Width: 140 cm.
Manutenzione/Cleaning Instructions:	Composizione/Composition: 58% R-PL 42% PL
	Martindale/Abrasion Resistance: 40000 cicli/cycles
	Manutenzione/Cleaning Instructions: Non candeggiare - Non utilizzare detersivi contenenti agenti ossidanti o brillantanti/Do not bleach - Do not use detergents containing oxidizing or brightening agents
	
	Caratteristiche/Features: Poliestere riciclato/Recycled
	Polyester
	Art. SOLEMIO
	Cat. F
	Altezza/Width: 140 cm.
	Composizione/Composition: 100% R-PL
	Martindale/Abrasion Resistance: 50000 cicli/cycles
	Manutenzione/Cleaning Instructions: Non candeggiare - Non utilizzare detersivi contenenti agenti ossidanti o brillantanti/Do not bleach - Do not use detergents containing oxidizing or brightening agents
	
	Caratteristiche/Features: Poliestere riciclato/Recycled
	Polyester
	Art. CACHEMIRE
	Cat. F
	Altezza/Width: 140 cm.
	Composizione/Composition: 100% PL
	Martindale/Abrasion Resistance: 35000 cicli/cycles
	Manutenzione/Cleaning Instructions:
	
	Caratteristiche/Features: Irrestringibile/No-Shrink

Legenda



Temperatura di lavaggio massima a 30°
Maximum washing temperature 30°C



Temperatura di lavaggio massima a 40°
Maximum washing temperature 40°C



Temperatura di lavaggio massima 30°, delicato
Maximum washing temperature 30°C, delicate



Temperatura di lavaggio massima 40°, delicato
Maximum washing temperature 40°C, delicate



Lavaggio a mano
Hand wash



Non lavare
Do not wash



Non lavare a secco
Do not dry clean



Lavaggio a secco
Dry clean



Lavaggio a secco, delicato
Dry clean, delicate



Non candeggiare
Do not bleach



Stirare a bassa temperatura (massimo 120°)
Iron at low temperature (maximum 120°C)



Non stirare
Do not iron



Non asciugare a tamburo
Do not tumble dry



Asciugare appeso
Line dry



Asciugare appeso all'ombra
Line dry in the shade



Non spazzolare
Do not brush