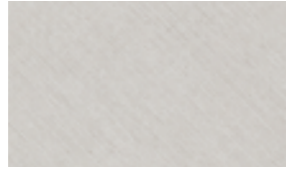


MT 1/ONE



MT NAM
Noce ambra
Amber walnut



MT CNV
Canvas

MT PREMIUM
MATERICO TEXTURE
TEXTURED



MT ALP
Alpaca

LEGNO
WOOD



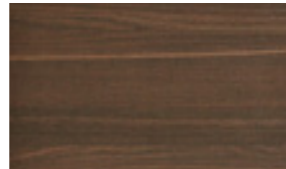
LGN RSB
Rovere sabbia
Sand oak



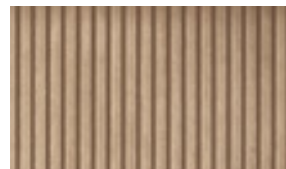
LGN RMK
Rovere moka
Mocha oak



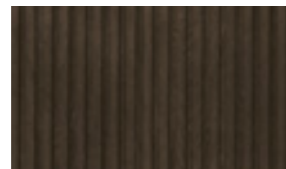
LGN RC
Rovere Carbone
Coal oak



LGN RT
Rovere termocotto
Heat-treated oak



LGN CRSB
Rovere sabbia canettè
Reeded sand oak



LGN CRMK
Rovere moka canettè
Reeded mocha oak

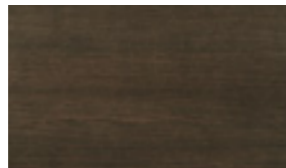


LGN CRC
Rovere carbone canettè
Reeded coal oak

MT PREMIUM
MATERICO ESSENZA
TEXTURED WOOD



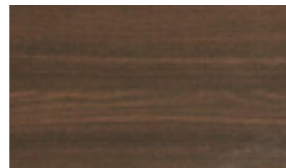
MT RSB
Rovere sabbia
Sand oak



MT RMK
Rovere moka
Mocha oak



MT RC
Rovere Carbone
Coal oak



MT RT
Rovere termocotto
Heat-treated oak



MT FO
Frassino oriente
Eastern ash

MT PREMIUM
MATERICO NODATO
KNOTTED TEXTURED



MT RNC
Nodato chiaro
Light knotted



MT RNS
Nodato scuro
Dark knotted



MT RNN
Rovere nodato naturale
Natural knotted oak

MT PREMIUM
MATERICO OPACO
MATT TEXTURED



MT OC BG
Bianco Gesso
Chalk White



MT OC MP
Madreperla
Mother of pearl



MT OC ARN
Arena



MT OC BA
Basalto
Basalt



MT OC AN
Antracite
Anthracite

MT PREMIUM
MATERICO PORO APERTO
OPEN PORE TEXTURED

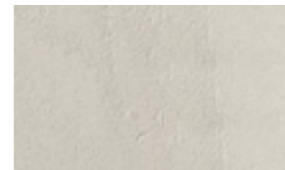


MT PA BG
Bianco gesso
Chalk white



MT PA MP
Madreperla
Mother of pearl

MT PREMIUM
MATERICO CEMENTO
TEXTURED CEMENT



MT CC
Cemento chiaro
Light cement

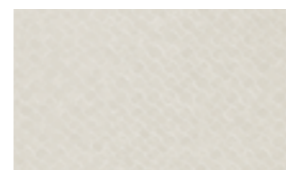


MT CV
Cemento cava
Cava Cement



MT CS
Cemento scuro
Dark cement

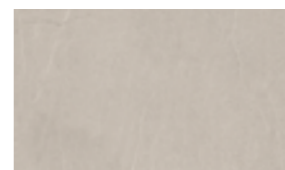
MT SPECIAL
MATERICO
TEXTURED



MT INT C
Intreccio chiaro
Light intreccio



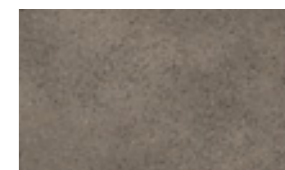
MT INT S
Intreccio scuro
Dark Intreccio



MT PSC
Piasentina chiara
Light Piasentina



MT PSS
Piasentina scura
Dark Piasentina



MT GR
Graniglia
Gravel grey



MT OBR
Ossido brunito
Burnished oxide



MT PG
Paglia Grigio
Grey straw



MT PB
Paglia Bronzo
Bronze straw

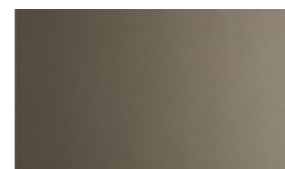


MT MB
Maya bronze

LACCATI METALLIZZATI
METALLIC LACQUERS



OCM 090
Bronzo
Bronze



OCM 091
Ghisa
Cast iron



OCM 092
Ottone
Brass

COLORI

LACCATI OPACHI E LUCIDI,
CANETTÈ LACCATO E METALLI,
LACCATI PORO APERTO
VETRO COLORATO LUCIDO E SATINATO.

MATT AND GLOSS LACQUERS,
REDED LACQUERS AND METALS,
OPEN-PORE LACQUERS
GLOSS AND SATIN LACQUERED GLASS.

Esempio con bianco gesso / Example for chalk white



121

COD. 100
laccati opachi e lucidi
matt and gloss lacquers



121

COD. 100
per laccati canettè
reeded lacquers



221

COD. 200
per laccati poro aperto
open-pore lacquers



321

COD. 300
vetri colorati lucidi
gloss lacquered glass



421

COD. 400
vetri colorati satinati
satin lacquered glass

I colori del campionario Tomasella sono di riferimento per laccati lucidi e opachi, laccati canettè, laccati poro aperto, vetro colorato lucido e satinato e metalli.

The Tomasella colour palette can be used for reference purposes for gloss and matt lacquers, reeded lacquers, open-pore lacquers, gloss and satin lacquered glass and metal finishes.



Bianco gesso / Chalk white

121
221
321
421



Platino / Platinum

162
262
362
462



Madreperla / Mother of pearl

124
224
324
424



Canapa / Hemp

150
250
350
450



Ghiaccio / Ice

173
273
373
473



Basalto / Basalt

177
277
377
477



Bromo / Bromite

176
276
376
476



Carta da zucchero / Blue grey

155
255
355
455



Hot / Hot grey

127
227
327
427



Arena

178
278
378
478



Grigio Piacenza / Piacenza grey

130
230
330
430



Fango / Mud brown

161
261
361
461



Mimetic / Mimetic green

166
266
366
466



Onice / Onyx

167
267
367
467



Mirto / Myrtle

165
265
365
465



Bosco / Forest green

168
268
368
468



Pomice / Pumice

152
252
352
452



Salina / Salt grey

163
263
363
463



Fumo / Smoky grey

174
274
374
474



Lava

175
275
375
475



Salvia / Sage

159
259
359
459



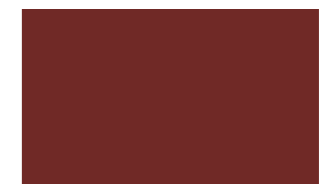
Zafferano / Saffron

158
258
358
458



Rubino / Ruby red

172
272
372
472



Bordeaux / Burgundy

156
256
356
456



Smoke

128
228
328
428



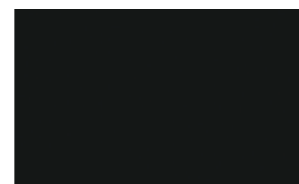
Antracite / Anthracite

160
260
360
460



Ardesia / Slate

164
264
364
464



Nero fumo / Smoke black

131
231
331
431



Curcuma / Turmeric

169
269
369
469



Terracotta

170
270
370
470



Tabasco

171
271
371
471



Pesca / Peach

157
257
357
457

ANTA METROPOLIS

METROPOLIS DOOR



VETRI PER ANTA METROPOLIS METROPOLIS DOOR GLASS OPTIONS



320
Vetro trasparente
Transparent glass

363
Vetro fumè
Smoked glass

Elegante e lineare, l'anta Metropolis è disponibile con telaio in finitura antracite abbinata al vetro fumè o trasparente. Lo spessore verticale diventa presa maniglia per un'apertura pratica e bella. L'anta Metropolis è perfetta per composizioni spalla.

FINITURE TELAIO DOOR FRAME FINISHES

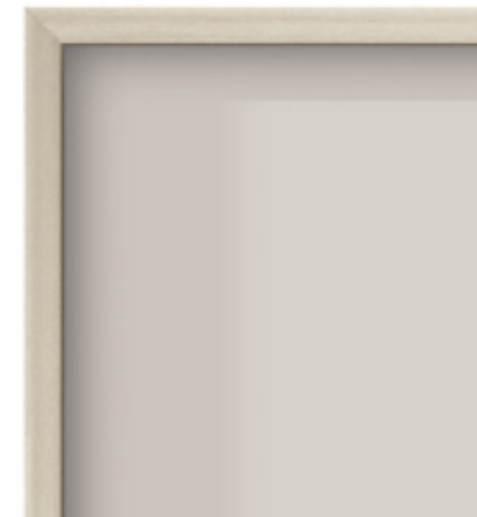


Antracite
Anthracite

Elegant and linear, the Metropolis door is available with an anthracite finish frame paired with smoked or transparent glass. The vertical profile becomes a beautiful and practical grip edge. The Metropolis door pairs perfectly with open shelving units.

ANTA VETRO

FINITURE ANTA TELAIO
DOOR FRAME FINISHES



Telaio titanio
Titanium frame



Telaio laccato opaco
Matt lacquered frame



*In tutti i colori laccati della gamma Tomasella.

*In all the matt lacquercolours of the Tomasella range.